

1

2

3

4

5

6

7

A

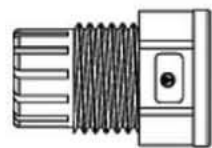
A



⑦



⑥



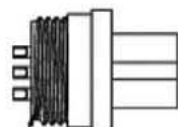
⑤



④



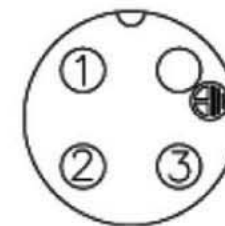
③



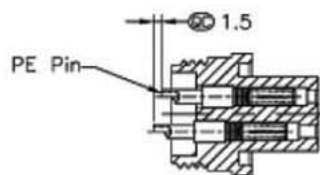
②



①



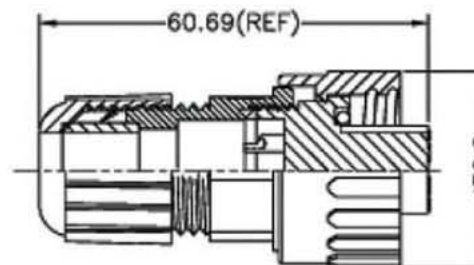
Pin Assignments
Front View



PE Pin

1.5

With Liquid Glue



60.69(REF)

30.2

B

B

C

C

D

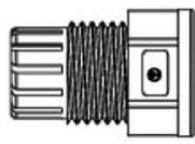
D



⑤



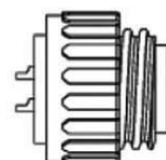
④



③



②



①



Material:

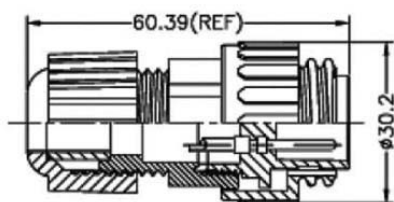
- Waterproof Rate: IP67
- Housing: Black ABS Plastic
- Connector: Black, Nylon+GF
- Pin: Copper Ally, Gold Plated
- Contacts: Gold Plating
- Cable: (3-4 Pins: 12A) (7-8 Pins: 8A)
- Operating temperature: -40°C to +105°C
- Seals for Cable OD: 5.5mm~10.8mm

E

E

F

F



60.39(REF)

30.2



Pin Assignments
Front View

Unit: MM±0.25MM

G

G

H

H

RoHS
Compliant

Scale	1:1
TOLERANCE	
X.X	±0.40
X.XX	±0.25
X.XXX	±0.15
Angle	±3°

Modification

Date

Name

ASSMANN
components

Drawn

12.02.11

Name

Chappell

Item No. **A-P04BFFA-S180-WP-R**
A-P04BMMA-S180-WP-R
A-P07BFFA-S180-WP-R
A-P07BMMA-S180-WP-R

Title
Waterproof Power Connector 4 & 7 Pins,
(12A & 8A), Assembly Type

Drawing No.

rev00

Replace

Sheet