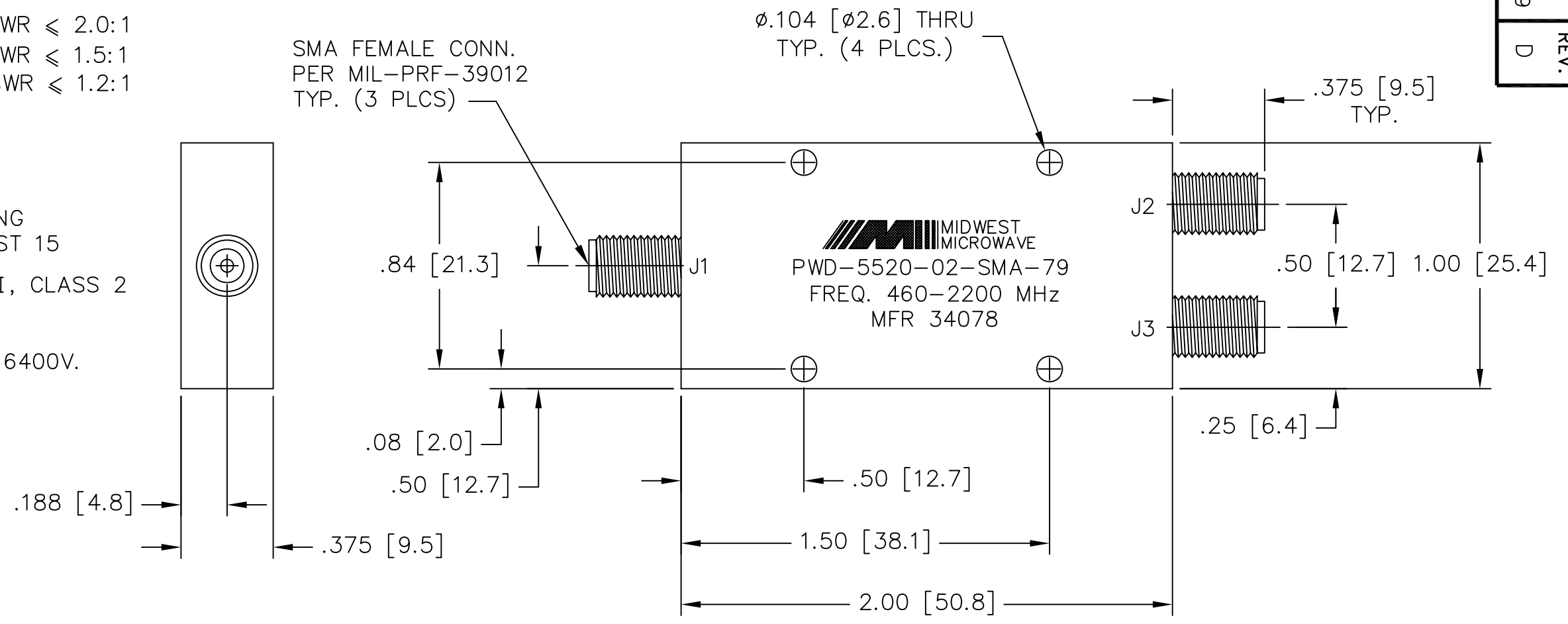


MODEL NUMBER
PWD-5520-02-SMA-79

REV.
D

- NOTES:
- 1.0 ELECTRICAL SPECIFICATIONS:
 - 1.1 FREQUENCY RANGE: 460 to 2200 MHz
 - 1.2 INSERTION LOSS: 0.5dB MAX.
 - 1.3 ISOLATION: 20dB MIN.
 - 1.4 VSWR (MAX): 1.25:1
 - 1.5 OUTPUT UNBALANCE:
 - 1.5.1 AMPLITUDE: 0.2dB MAX.
 - 1.5.2 PHASE: 4.0° MAX.
 - 1.6 MAX. INPUT POWER:
 - 3 WATTS WITH OUTPUT LOAD VSWR ≤ 2.0:1
 - 8 WATTS WITH OUTPUT LOAD VSWR ≤ 1.5:1
 - 20 WATTS WITH OUTPUT LOAD VSWR ≤ 1.2:1
 - 1.7 OPERATING TEMP. RANGE:
 - 65°C to +125°C
 - 2.0 FINISH
 - 2.1 EPOXY SEAL WITH EMERSON-CUMING ECCOBOND 45 EPOXY & CATALYST 15
 - 2.2 GREY OVER MIL-E-15090 TYPE II, CLASS 2 OVER MIL-C-5541 CLASS 3A MEETS MIL-F-14072 MEETS MIL-E-5400 AND MIL-E-16400V.
 - 3.0 DATA: (NO DATA REQUIRED)
 - 4.0 DIMENSIONS IN PARENTHESIS ARE IN MILLIMETERS.
 - 5.0 MARKING: MARK UNIT AS SHOWN (REF.: SLK-09422-82-09)



REV.	DESCRIPTION	DATE
-	RELEASED	7/2/93
A	ECN 19023	2/4/03
B	ECN 19025	2/5/03
C	ECN 19102	3/18/03
D	ECN 19458	11/4/03

UNLESS OTHERWISE NOTED DIMENSIONS ARE IN INCHES AND TOLERANCES ARE: 3 PLACE DECIMALS ±.005 2 PLACE DECIMALS ±.02 FRACTIONS ±1/64 PARALLELITY: T.I.R. _____ FLATNESS: T.I.R. _____ CONCENTRICITY: T.I.R. _____ ANGLES AND PERPENDICULARITY: ±1°	FSCM NO. 34078	MIDWEST MICROWAVE	
	NOTICE: The information contained in this drawing is proprietary and must not be used without the permission of Midwest Microwave	TITLE POWER DIVIDER	
DRAWN/DATE A.BEATTY 6/28/93	ENG./DATE P.GOODMAN 7/2/93	DRAWING NUMBER PWD-5520-02-SMA-79	
CHECKED/DATE M.HOLLMAN 7/1/93	APPROVED/DATE	SCALE: 2=1	SHEET 1 of 1