

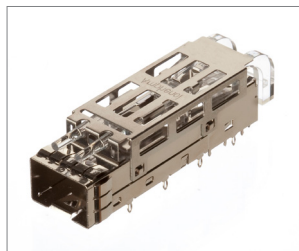
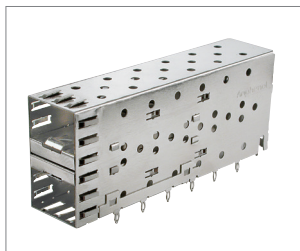
ExpressPort® SFP+

Product Description

The ExpressPort® SFP+ interconnect system provides data transfer speeds of up to 16 Gbps. The design of the ExpressPort® SFP+ connector minimizes impedance discontinuities and reflections at high data rates and provides a 10 to 20 dB improvement in Near-End Crosstalk. The ExpressPort® SFP+ unique cage construction features EMI shielding available in the form of metal spring fingers or elastomeric gaskets. Additional features available include light pipes, heat sinks and many other custom features.

Applications		SFF Supported Standards	
Storage	Switches	Connector SFF-8071	
Network Interface	Hubs and Servers	Cage SFF-8432	
Test and Measurement Equipment	Cellular Infrastructure	Ganged SFF-8433	

Product Specifications - ExpressPort® SFP+			
CONNECTOR		CAGE	
Materials Specifications			
Housing	Black or nature color, Glass-reinforced, lead-free solder reflow process compatible thermoplastic	PCB Thickness	
Contacts Base Material	Phosphor Bronze	Single Side Mount	1.57 mm (0.062 in.)
Contact Normal Force	100 grams	“Belly to Belly”	3.00 mm (0.118 in.)
Plating Solder Tails	Matte tin or gold flash options		
Plating Mating Area	Gold		
Resonance Dampening Feature	Conductive Polymer		
Operating & Storage Temperature	-55° to +85°C		
Electrical Specifications			
Operating Voltage	30 V DC per contact		
Operating Current	0.5 A per contact		
Differential Impedance	100 Ω +/-10 Ω		
Mechanical Specifications			
Mating Force	50 N max.	Unmating Force	11.50 N max.
Durability	250 mating cycles	Insertion Force to PCB	1000 N for 2 port 2100 N for 4 port 3000 N for 6 port
Card Entry Slot	1.0mm-thick integrated circuit cards		
Options			
Packaging	Tape and Reel	Packaging	Tray, Tape and Reel Available for Single Port
EMI Options, Heat Sink and Clip	Available		
Configurations	1xN (N = 1,2,3,4,5,6,8) 2xN (N = 1,2,3,4,5,6,8)		
Environmental Specifications			
RoHS	Yes		
Halogen Free	Yes		
Flammability Rating	UL 94V-0		



Ordering Information

ExpressPort® SFP+ Connector

UE76 A 20 X 0 X 0 T

UE76	SERIES DESIGNATION		PACKAGING	T
A	STYLE A - R/A Single Surface Mount Connector		T - Tape & Reel (500/Reel)	
20	NUMBER OF POSITIONS 20 - 20 Positions		OPTION 3 0 - Standard	0
X	CONTACT PLATING 2 - 30 μ" (0.76 μm) Gold Plating on Mating Area; Gold Flash on Termination 3 - 30 μ" (0.76 μm) Gold Plating on Mating Area; Matte Tin on Termination 5 - 15 μ" (0.38 μm) Gold Plating on Mating Area; Gold Flash on Termination 6 - 15 μ" (0.38 μm) Gold Plating on Mating Area; Matte Tin on Termination		OPTION 2 0 - Standard 1 - Resonance Cancellation Features	X
			OPTION 1 0 - Standard	0

ExpressPort® SFP+ Cage

U77 X X X X X X X X X X

U77	SERIES DESIGNATION		PACKAGING	X
X	STYLE A - 1 Row C - 1 Row Cage; Light Pipe Combo (Top) E - 1 Row Cage; Heat Sink Combo (Fin) F - 1 Row Cage; 1° Angle (1X1 Only)		1 - Tray (ACC Re-Packed) T - Tape & Reel (1X1 Only)	
X	NUMBER OF PORTS IN ROW 1 - Single in Row 2 - Inline 1X2 3 - Inline 1X3 4 - Inline 1X4 5 - Inline 1X5 6 - Inline 1X6 8 - Inline 1X8		OPTION 1 0 - Standard 7 - Cage with Extra Bottom Spring Fingers, No Bottom Mid G-Pins 8 - Cage with Half-Moon Mid G-Pins 9 - Cage with Extra Bottom Spring Fingers & Half Moon Mid G-Pins	X
X	CHASSIS GROUNDING 3 - Metal Spring Fingers (No Bottom Latch Cover) 4 - Elastomeric Gasket 6 - Metal Spring Fingers (1 Piece Design Bottom Latch Cover) 7 - Metal Spring Fingers with Insulating Tape		DUST COVER 0 - Without Dust Cover D - With Dust Cover (Shipped Loose)	X
X	HEAT SINK / LIGHT PIPE 1 - No Heat Sink / Light Pipe 2 - Heat Sink 3 - Light Pipe (1XN Cage Only)		PLATING 1 - Bright Tin (for Wave Solder) 2 - Nickel 3 - Matte Tin (for Reflow 245°)	X
X	PCB MOUNTING X - Various Options Available - Consult Factory			

ExpressPort® SFP+ 2XN (Cage/Connector)

UE86 X X X X X X X X X 1

UE86	SERIES DESIGNATION		PACKAGING	1
X	STYLE B - 2XN, No Light Pipe D - 2XN, Small Light Pipe Openings K - 2XN, Large Light Pipe Openings L - 2XN, Low Profile Combo (No Light Pipe) S - 2XN, Thermally Enhanced		1 - Tray	
X	NUMBER OF PORTS IN ROW 1 - 2X1 2 - 2X2 3 - 2X3 4 - 2X4 5 - 2X5 6 - 2X6 8 - 2X8		PLATING OPTION: CAGE 1 - Bright Tin 2 - Nickel 3 - Matte Tin	X
X	CHASSIS GROUNDING 4 - Elastomeric Gasket 5 - Elastomeric Gasket, Bottom Insulating Tape 6 - Metal Spring Fingers 7 - EMI Fingers, Bottom Insulating Tape		PLATING OPTION: CONNECTOR X - Various Options Available - Consult Factory	X
X	MOUNTING TYPE: CONNECTOR 2 - Standard Press-Fit Pins (12Gbps) 5 - Small Press-Fit Pins for High Speed Termination (16Gbps) A - Press-Fit Pins (10Gbps)		DUST COVER 0 - Without Dust Cover D - With Dust Cover (Shipped Loose)	X
X	MOUNTING TYPE: CAGE 7 - Standard 2XN A - Narrow Flange C - Enhanced EMI		LIGHT PIPE OPTION 0 - No Light Pipe 1 - 4 Light Pipes/2X1 2 - 2 Inner Light Pipes/2X1 3 - 2 Outer Light Pipes/2X1	X



Order Information:

P: 416.291.4401 | F: 416.292.0647 | E: cages@amphenol-highspeed.com

For more information consult factory or visit amphenol-highspeed.com

Product Applications; List represents common uses for the product but is not limited to these uses.
All specifications are subject to change without notice.
© 2015 Amphenol High Speed Interconnects. All rights reserved.
TechBrochure_ExpressPortSFP+_Rev.1.17

