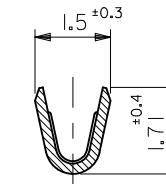
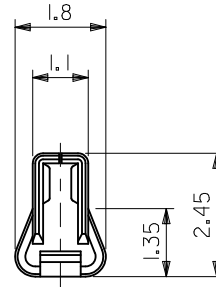
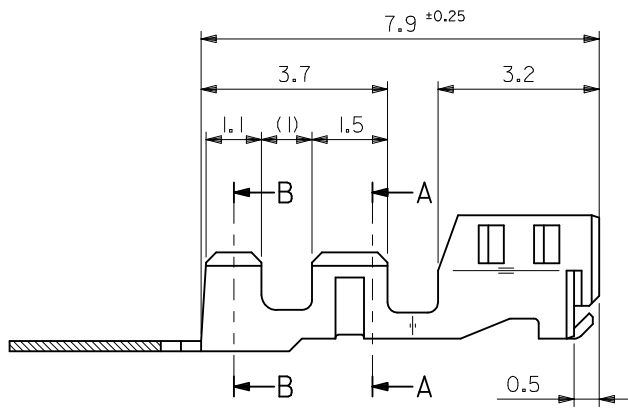
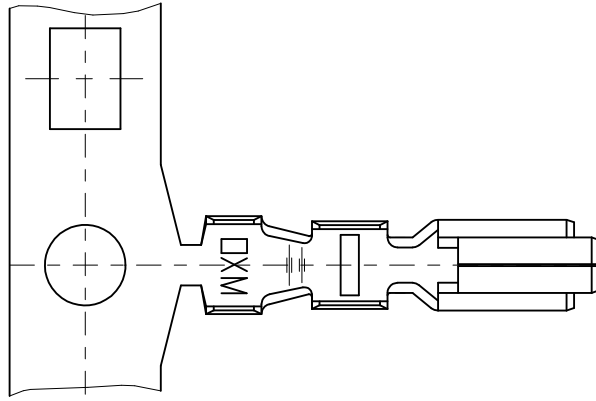
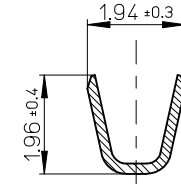


注記
NOTES

- 適合ハウジング : 51103 シリーズ
APPLICABLE HOUSING : 51103 SERIES
- 材料 : リン青銅, 錫メッキ材 (t=0.2)
MATERIAL : PRE-TINNED PHOSPHOR BRONZE (t=0.2)
- 適用電線サイズ AWG #26
WIRE SIZE
被覆外径 $\phi 0.93 \sim 1.03$
INS RANGE
- ELV及びRoHS適合品
ELV AND RoHS COMPLIANT



断面 A-A
SECT. A-A



断面 B-B
SECT. B-B

PLASTIC BAG	50351-8110	バラ状 LOOSE
REEL	50351-8010	連鎖状 CHAIN
PACKAGING SPEC.	オーダー番号 ORDER NO.	形態 FORM
CONNECTOR SERIES NO. 50351-8*10		

REVISED EC NO: J2010-1995 DRWN: NYOSHIKAWA 2010/04/02 CHKD: KASAKAWA 2010/04/02 APPR: NUKITA 2010/04/05	GENERAL TOLERANCES (UNLESS SPECIFIED)		DIMENSION STYLE MM ONLY		SCALE ---	DESIGN UNITS METRIC	THIRD ANGLE PROJECTION
	10 UNDER	± 0.2	DRAWN BY NYOSHIKAWA	DATE 2009/06/11	TITLE 2.5 W/B CONN. CRIMP REC.		
	10 OVER 30 UNDER	± 0.25	CHECKED BY THARUYAMA	DATE 2009/06/11	MATERIAL NO. SD-50351-002		
	30 OVER	± 0.3	APPROVED BY NUKITA	DATE 2009/06/11	SHEET NO. 1 OF 1		
	ANGULAR ± 3 °		DRAFT WHERE APPLICABLE MUST REMAIN WITHIN DIMENSIONS		MOLEX INCORPORATED SEE CHART THIS DRAWING CONTAINS INFORMATION THAT IS PROPRIETARY TO MOLEX INCORPORATED AND SHOULD NOT BE USED WITHOUT WRITTEN PERMISSION		