

MBUS-DEMO User Manual

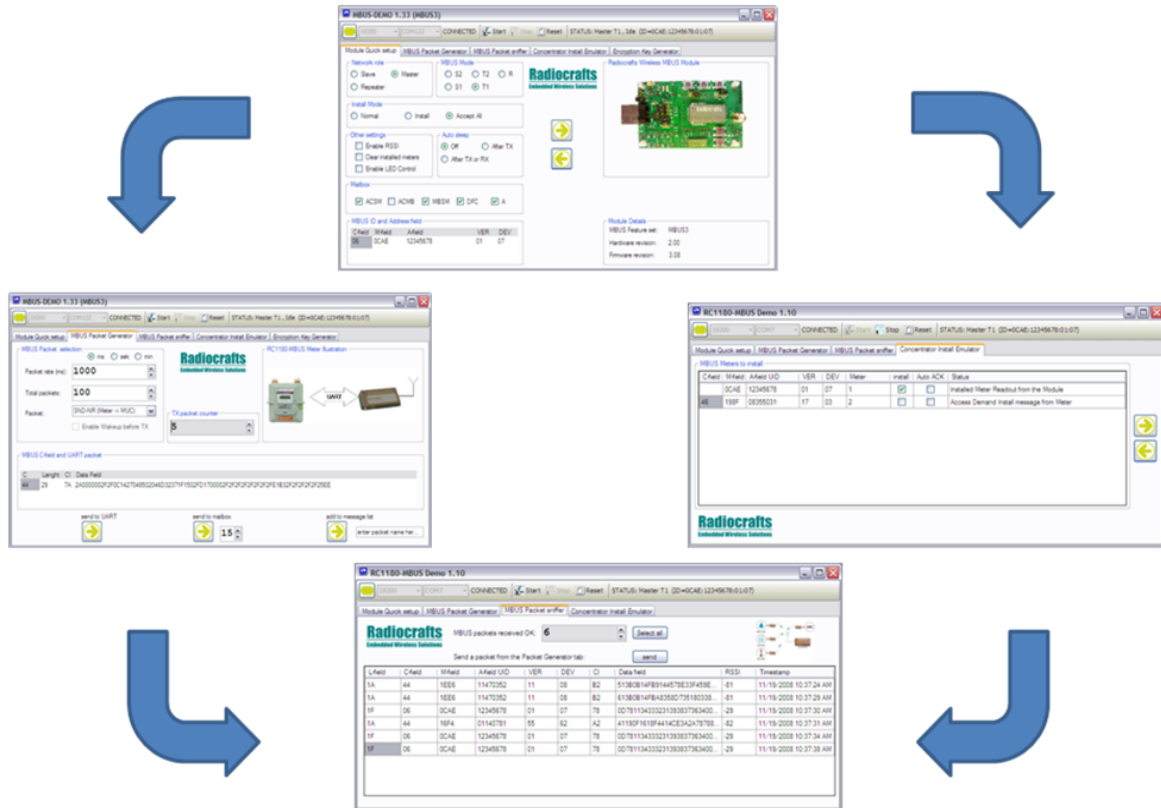


Table of Contents

TABLE OF CONTENTS	1
INSTALLATION GUIDE	2
SCREEN SETTINGS	2
INTRODUCTION	3
CONNECTING TO THE MODULE	3
MODULE QUICK SETUP TAB	4
MBUS PACKET GENERATOR TAB	5
MBUS PACKET SNIFFER TAB	6
CONCENTRATOR INSTALL EMULATOR TAB	7
ENCRYPTION KEY GENERATOR	10
DOCUMENT REVISION HISTORY	12
DISCLAIMER	12
TRADEMARKS	12
LIFE SUPPORT POLICY	12
CONTACT INFORMATION	12

Installation Guide

The MBUS-DEMO is a part of Radiocrafts' RCTools PC suite tailored for use with Radiocrafts' RF Modules. For full installation procedure please read the RCTools Installation Guide available at www.radiocrafts.com.

The MBUS-DEMO requires access to the modules UART via an available COM-port. Typically the UART-access is obtained via an UART-to-RS232 or UART-to-USB converter. The Demo Boards (DB) from Radiocrafts contain an on-board level shifter for direct plug-in to a PC and further access to the related COM-port.

Screen Settings

It is recommended to run the application with screen size at least 1024x768 and font resolution 96dpi.

Introduction

MBUS-DEMO, is designed to demonstrate a Wireless M-Bus system using the Radiocrafts Wireless MBUS module development kit. The program provides Module Quick setup, MBUS Packet generator, MBUS Packet Sniffer and an Installation tool for the MBUS2/MBUS3 feature set. A Radiocrafts MBUS Demo Board is needed for this demo to operate properly.

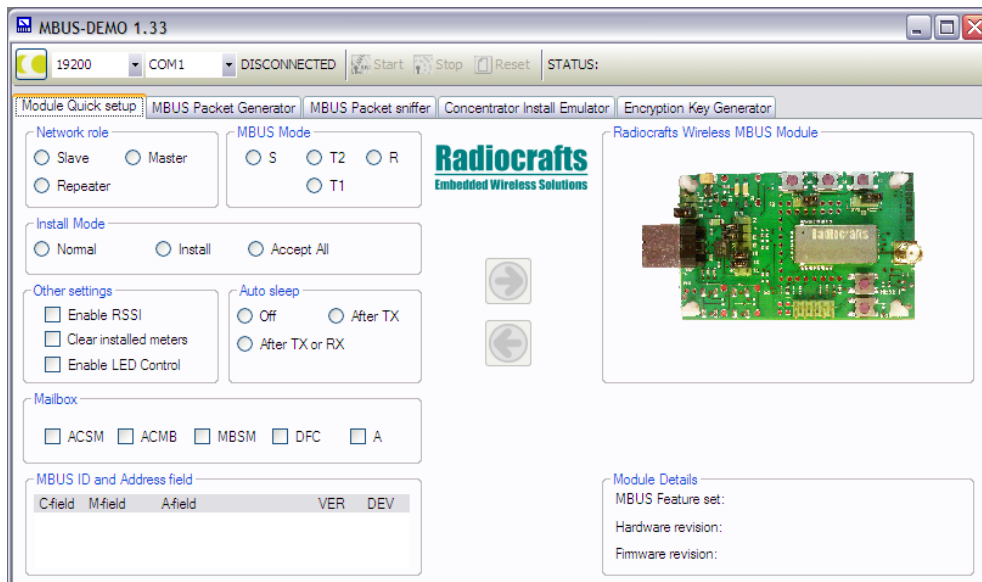


Figure 1. Main window

Start the program, and the MBUS-DEMO main window should look similar to what is shown in Figure 1.

Connecting to the Module

Before connecting, select the proper settings for your serial port:

- name of an available communication port (COMx)
- baud rate used to communicate with the module

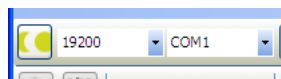


Figure 2. Port settings

To connect to the module you need to press the **connect** button. If your COM port is not listed you can also manually type in the COM port to use.



Figure 3. Connect button

A warning message will pop-up if you try to connect to a port that is already in use. This is illustrated in figure 4.

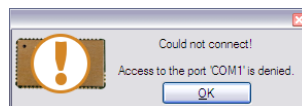


Figure 4. COM port conflict message

Module Quick Setup Tab

The Module Quick setup Tab allows you to read back and configure basic MBUS configuration parameters on the connected Demo Board. The input entry selections and status information will be updated when you read the configuration from the module. A read-back from the module should be the first thing to do after connect to the COM port. Some of the input entries are not valid for all MBUS feature set, and they will be greyed out or hidden based on the read back information. Figure

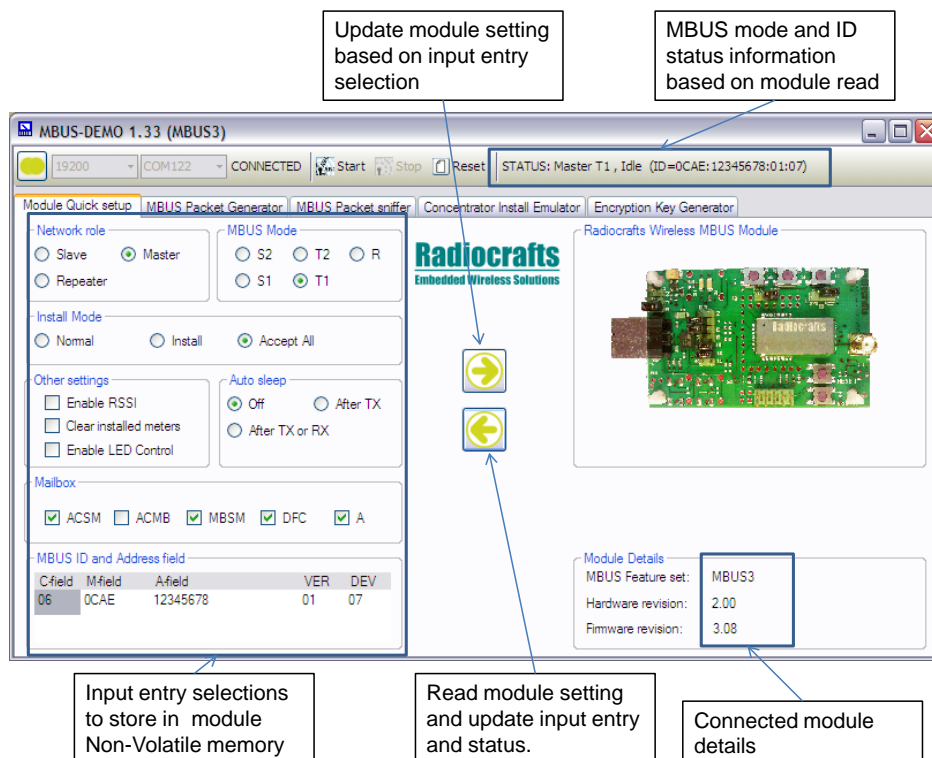


Figure 5. Module Quick Setup after MBUS3 read back

Step-by-step guide for Module Quick Setup:

1. Connect the Radiocrafts MBUS Demo Board to an available COM port
2. Read back configuration settings from the Demo Board
3. Change settings and update the connected Demo Board if needed.

For detailed configuration it is advised to use the more powerful MBUS-CCT tool instead of the MBUS-DEMO software. You will then get access to all configuration parameter settings of your connected module.

MBUS Packet Generator Tab

The MBUS Packet Generator Tab allows you to set up one of the RC1180-MBUS modules as a meter that sends meter status on request or periodically. The UART package from the PC to the RC1180-MBUS is listed, and part of the message can be changed by the user. This package is received from the meter via the UART interface directly to the RC1180-MBUS as illustrated in the picture. The user entries for the MBUS Packet Generator window is illustrated in figure 6.

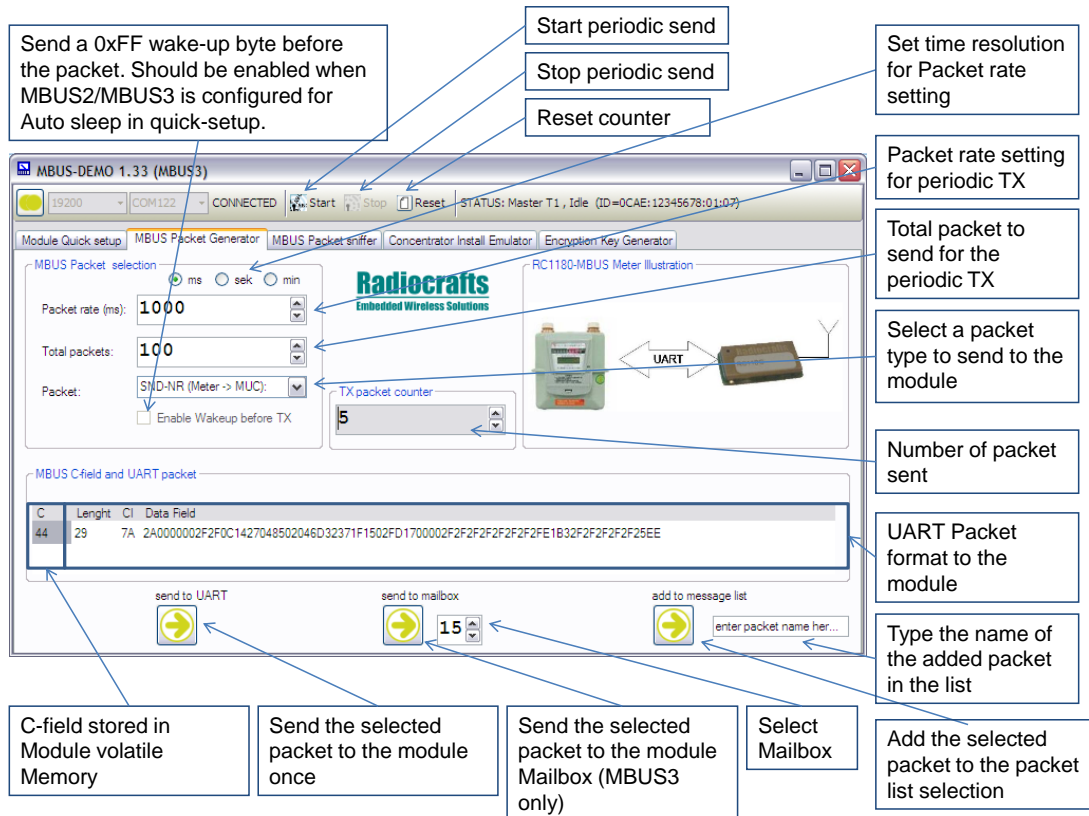


Figure 6. MBUS Packet Generator

Step-by-step guide for setting up the MBUS Packet Generator in periodic TX mode:

1. Configure the Demo Board as Slave in the Module Quick Setup tab
2. Select the MBUS Packet Generator tab
3. Set the Packet rate that gives the periodical interval in ms (optional)
4. Set the total packets to transmit in the periodic test (optional)
5. Select a packet to transmit.
6. Change the packet payload if needed (optional)
7. Start the periodic transmit from the toolbar start button

The packet counter will now increment and send the UART packet periodically according to the Packet rate until the total packets has been transmitted. The user can stop and reset the periodic transmission from the toolbar.

MBUS Packet Sniffer Tab

The MBUS Packet Sniffer tab allows you to set up one of the RC1180-MBUS modules as a Wireless M-Bus Collector. This board will act as a Wireless M-Bus packet sniffer, that receives and lists all incoming Wireless M-Bus packets for the selected MBUS mode. The user window for the MBUS Packet Sniffer is illustrated in figure 7.

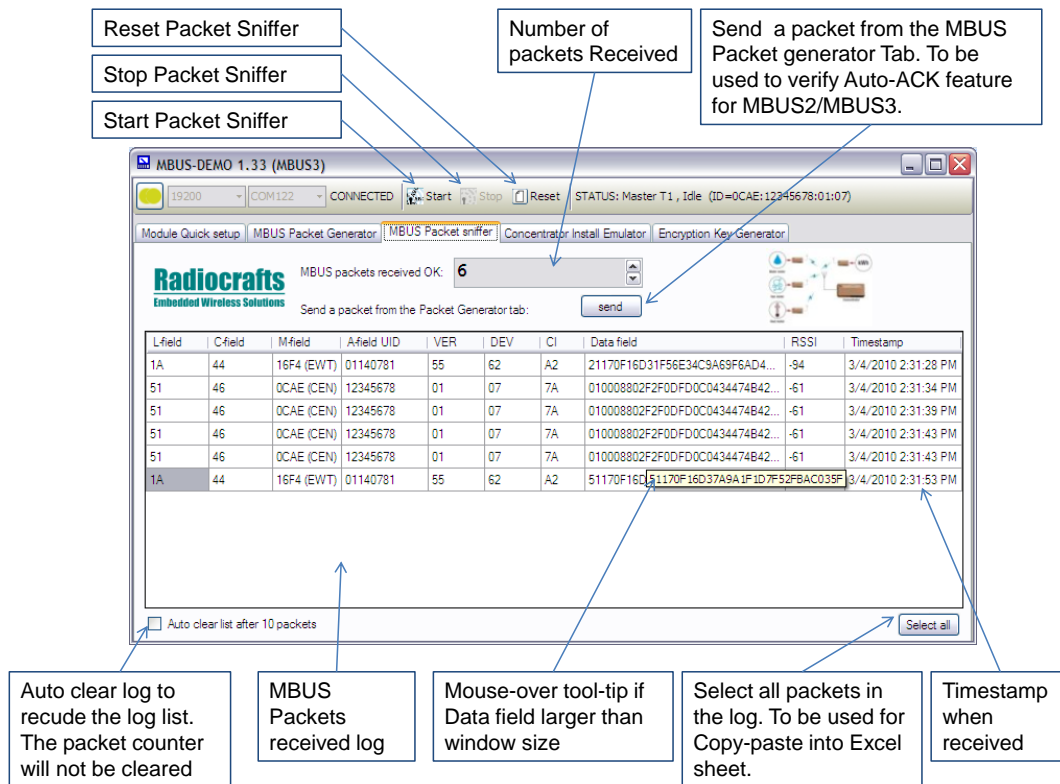


Figure 7. MBUS Packet Sniffer

Step-by-step guide for setting up the MBUS Packet Sniffer:

1. Configure the Demo Board as Master, enable accept all messages and include RSSI in the Module Quick Setup tab
2. Select the MBUS Packet Sniffer Tab
3. Start the MBUS Packet Sniffer from the toolbar start button

The MBUS Packet Sniffer will now count the total number of received MBUS packets and list them in the Meter Collector data field including RSSI and packet ID for each new packet. The meter collector will continue to search for MBUS packets until the Sniffer is stopped using the stop button on the toolbar. All collector data can be selected in order to copy-paste the information to an Excel spreadsheet for further analysis. The reset button will empty the logger and set the packet receive counter to zero.

Concentrator Install Emulator Tab

The Concentrator Install Emulator tab is a tool for installing and binding meters to the RC1180-MBUS module. The module will act as a Wireless M-Bus concentrator that only accepts installed meters. This tab is not in use for MBUS1 and different for MBUS2 and MBUS3. The user window for the Concentrator Install Emulator for MBUS2 is illustrated in figure 8.

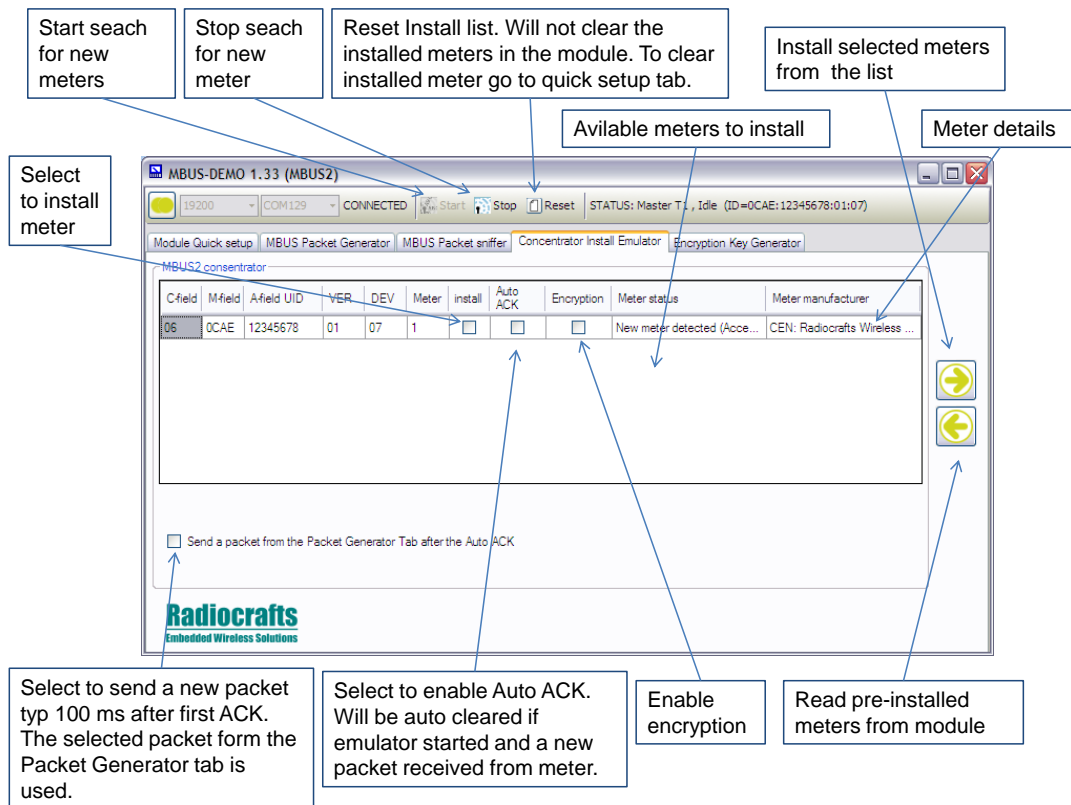


Figure 8. MBUS2 Concentrator Install Emulator

Step-by-step guide for installing a meter to the MBUS2 Concentrator Emulator:

1. Ensure that you have the MBUS2 feature set on the connected module.
2. Configure the Demo Board as Master, enable accept Install messages and include RSSI, in the Module Quick Setup tab.
3. Read pre-installed meters by pressing left-arrow key.
4. Start the search for new install messages pressing the toolbar start button.
5. Wait for the install message from a meter you want to install.
6. Select the meters you want to install
7. Click on the right-arrow button to install the selected meter.

If Auto ACK is enabled the Master will automatically send an ACK when receiving a new message from the installed slave. The Auto ACK flag will be cleared after the Master send this ACK. You may also enable to send a packet from the packet Generator tab after this first ACK according to NTA8130.

You can change mode to normal mode and use the packet sniffer to receive messages from installed meters only after the installation is completed. The Install Emulator will only list up

new meters even if they send several packets. This will simplify the meter selection and easily inform about available meters to install.

The user window for the Concentrator Install Emulator for MBUS3 is illustrated in figure 9.

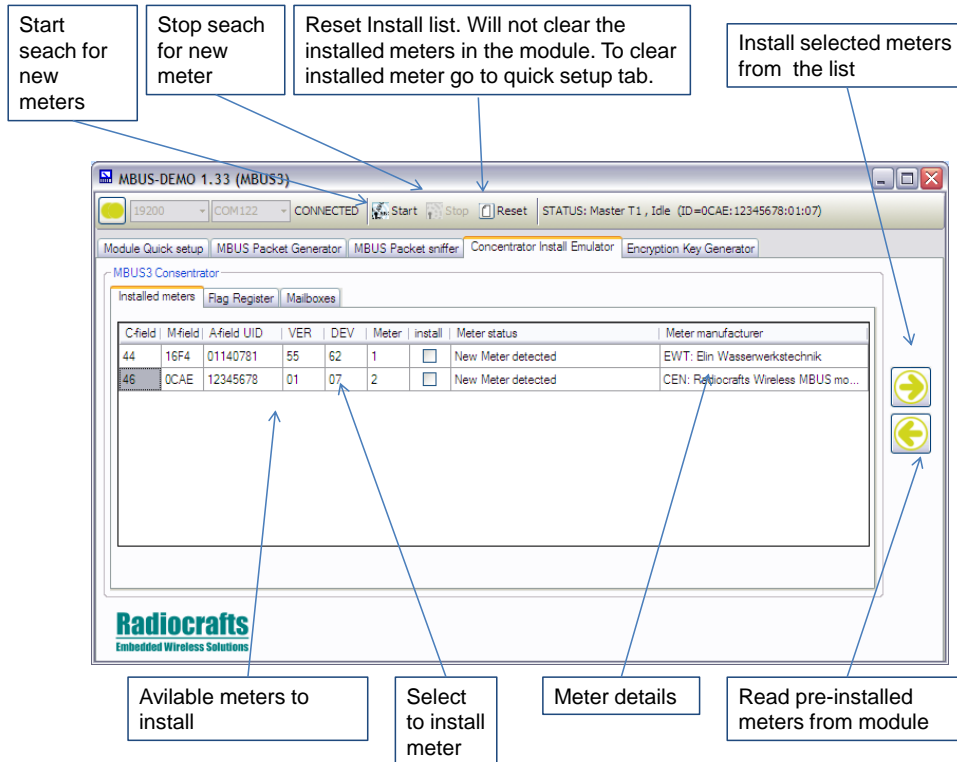


Figure 9. MBUS3 Concentrator Install Emulator

Step-by-step guide for installing a meter to the MBUS3 Concentrator Emulator:

1. Ensure that you have the MBUS2 feature set on the connected module.
2. Configure the Demo Board as Master, enable accept Install messages and include RSSI, in the Module Quick Setup tab.
3. Read pre-installed meters by pressing left-arrow key.
4. Start the search for new install messages pressing the toolbar start button.
5. Wait for the install message from a meter you want to install.
6. Select the meters you want to install
7. Click on the right-arrow button to install the selected meter.

Auto ACK and encryption setting for MBUS3 is available in the Register flag tab. This is illustrated in figure 10 and is only available for MBUS3.

Encryption Key Generator

The Encryption Key Generator tab is a tool for MBUS2 and MBUS3 to calculate and update the connected module with encryption keys. The view is different for MBUS2 and MBUS3 and figure 12 shows MBUS3 Encryption key generator Tab.

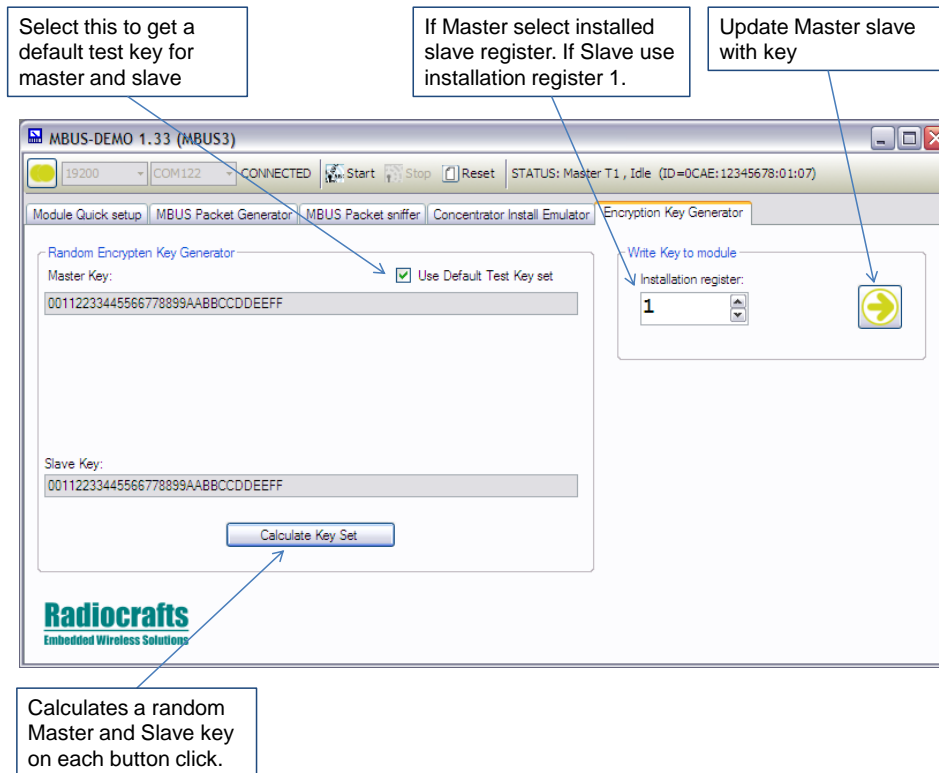


Figure 12. MBUS3 Encryption Key Generator

Step-by-step guide for enable Encryption for MBUS3 Master:

1. Install a meter to a register 1-64.
2. Calculate an encryption key and update Master with key to installed slave register.
3. Enable encryption in the Concentrator Install Emulator / Flag Register (see figure 9)

Step-by-step guide for enable Encryption for MBUS3 Slave:

1. Update Slave with same encryption key as the Master to slave register 1.
2. Enable encryption in the Concentrator Install Emulator / Flag Register 1 (see figure 10)

Figure 13 shows MBUS2 Encryption key generator Tab.

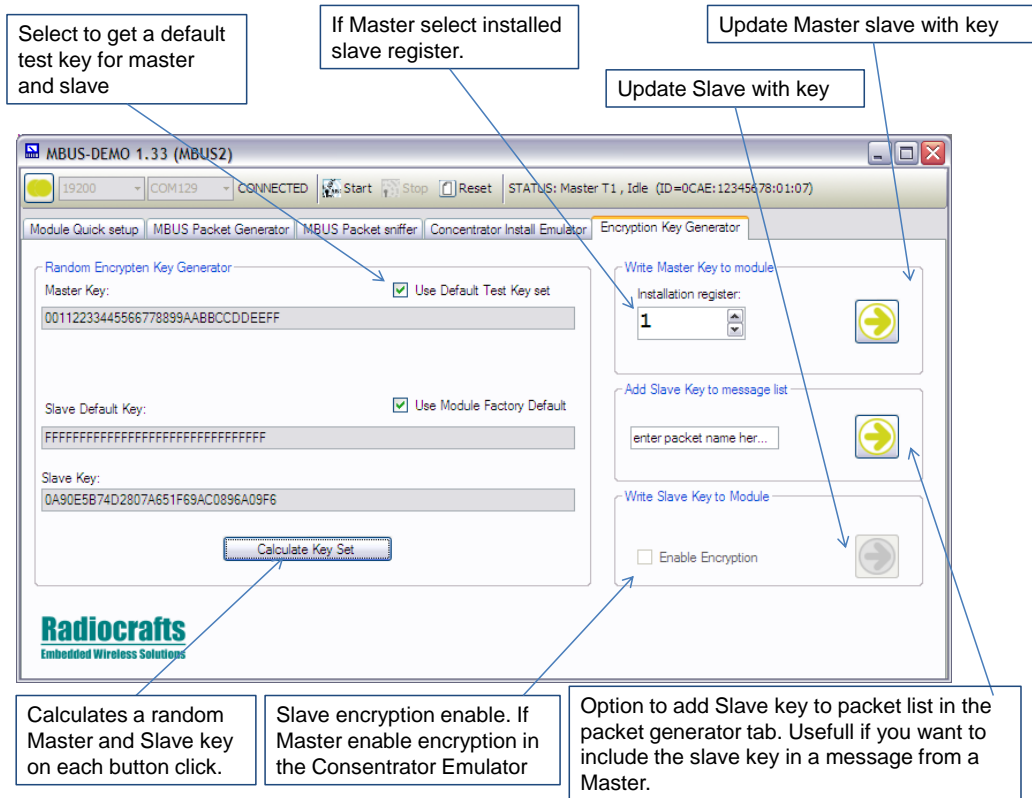


Figure 13. MBUS2 Encryption Key Generator

Step-by-step guide for enable Encryption for MBUS3 Master:

4. Install a meter to a register 1-8.
5. Calculate an encryption key and update Master with key to installed slave register.
6. Enable encryption in the Concentrator Install Emulator (see figure 8)

Step-by-step guide for enable Encryption for MBUS3 Slave:

3. Update Slave with the encrypted Master Key.
4. Enable encryption in the Encryption Key Generator tab

Document Revision History

Document Revision	Changes
1.0	New Revision
1.1	Upgraded with MBUS2 feature set functions (MBUS-DEMO rev 1.10)
1.30	Upgrades with MBUS3 features (MBUS-DEMO 1.33)

Disclaimer

Radiocrafts AS believes the information contained herein is correct and accurate at the time of this printing. However, Radiocrafts AS reserves the right to make changes to this product without notice. Radiocrafts AS does not assume any responsibility for the use of the described product; neither does it convey any license under its patent rights, or the rights of others. The latest updates are available at the Radiocrafts website or by contacting Radiocrafts directly.

As far as possible, major changes of product specifications and functionality, will be stated in product specific Errata Notes published at the Radiocrafts website. Customers are encouraged to check regularly for the most recent updates on products and support tools.

Trademarks

RC232™ is a trademark of Radiocrafts AS. The RC232™ Embedded RF Protocol is used in a range of products from Radiocrafts. The protocol handles host communication, data buffering, error check, addressing and broadcasting. It supports point-to-point, point-to-multipoint and peer-to-peer network topologies.

All other trademarks, registered trademarks and product names are the sole property of their respective owners.

Life Support Policy

This Radiocrafts product is not designed for use in life support appliances, devices, or other systems where malfunction can reasonably be expected to result in significant personal injury to the user, or as a critical component in any life support device or system whose failure to perform can be reasonably expected to cause the failure of the life support device or system, or to affect its safety or effectiveness. Radiocrafts AS customers using or selling these products for use in such applications do so at their own risk and agree to fully indemnify Radiocrafts AS for any damages resulting from any improper use or sale.

© 2010, Radiocrafts AS. All rights reserved.

Contact Information

Web site: www.radiocrafts.com

Address:

Radiocrafts AS
Sandakerveien 64
NO-0484 OSLO
NORWAY

Tel: +47 4000 5195

Fax: +47 22 71 29 15

E-mails: radiocrafts@radiocrafts.com

sales@radiocrafts.com

support@radiocrafts.com