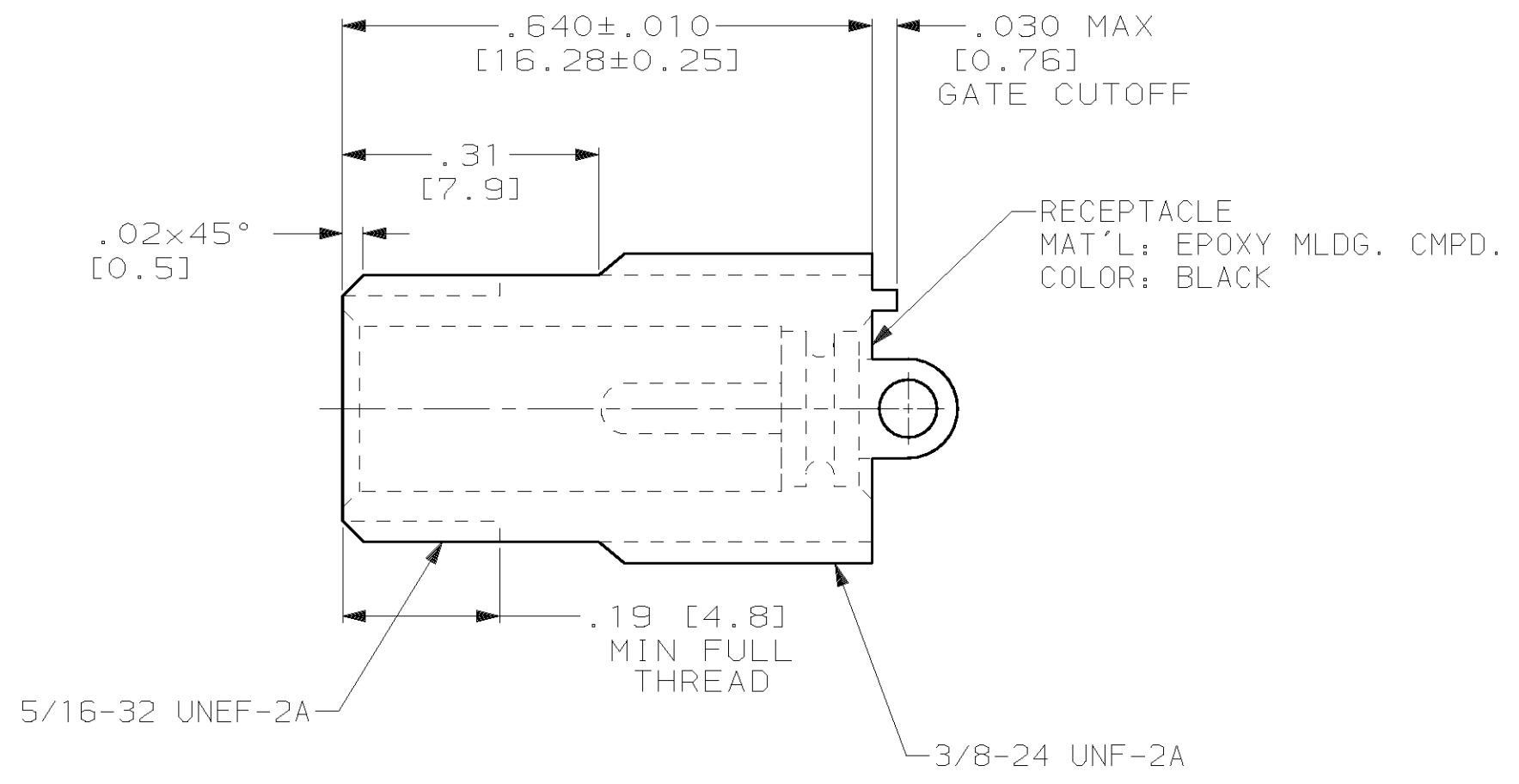
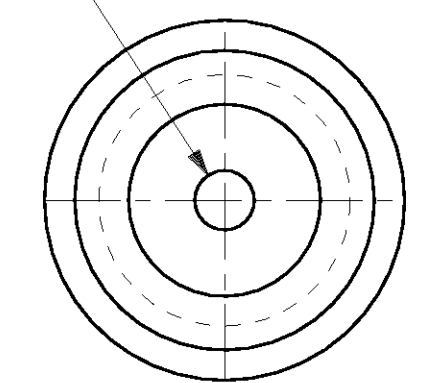


THIS DRAWING IS UNPUBLISHED. RELEASED FOR PUBLICATION, 19 .
 © COPYRIGHT 19 BY AMP INCORPORATED. ALL INTERNATIONAL RIGHTS RESERVED.

PROD 4087 CODE	LOC DF	DIST 50	P	F	REVISIONS				
					ZONE	LTR	DESCRIPTION	DATE	APPD
						0	RELEASED PER NPR 92-176 CT	7-92	SG
						A	REV PER 0600-7334-98 TT	070CT98	DE
			✓	✓		B	REV PER 0600-8083-98 JB	03-99	ML

.062 [1.57] DIA PIN
 MAT'L: BRASS PER ASTM-B-16
 FINISH: GOLD PLATED PER MIL-G-45204
 OVER NICKEL PER QQ-N-290



1. RECEPTACLE WILL ACCEPT A LGH-1/2 LEAD WITH A .53 [13.5] MOLDED END LENGTH.

THIS DRAWING IS A CONTROLLED DOCUMENT FOR AMP INCORPORATED. IT IS SUBJECT TO CHANGE AND THE CONTROLLING ENGINEERING ORGANIZATION SHOULD BE CONTACTED FOR THE LATEST REVISION.

DO NOT SCALE PRINT. UNLESS SPECIFIED DIMENSIONS IN INCHES [mm]		DR 7-1-92 C.C.THOMAS	AMP Incorporated Harrisburg, PA 17105-3608
TOLERANCES ON: 2 PLC DEC ± .01 [0.3] 3 PLC DEC ± .005 [0.13] ANGLES ± -		CHK 7-8-92 S.GLATFELTER	
MATERIAL SEE CALLOUTS	APPD 7-8-92 S.GLATFELTER	APPD 7-8-92 C.C.THOMAS	NAME RECEPTACLE, LGH-1/2, SPECIAL
FINISH SEE CALLOUTS	PRODUCT SPEC -	APPLICATION SPEC -	SIZE B
	WEIGHT -		CAGE CODE 00779
			DRAWING NO C-448462
			SCALE 5:1
			SHEET 1 OF 1

448462-1

PART NO