

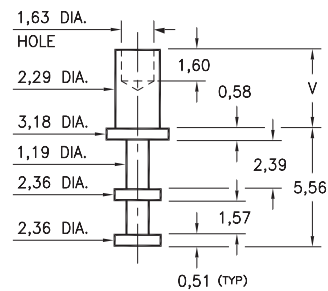
MALE PCB PINS

SOLDER TERMINAL TURRETS

2501

2501-X-00-XX-00-00-07-0

Swage mount in 2,39 hole

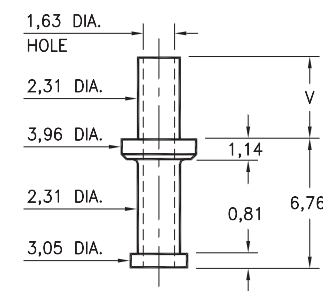


Basic Part Number	Board Thickness	Length V
2501-1	0,79	1,98
2501-2	1,57	2,77
2501-3	2,39	3,56
2501-4	3,18	4,34

2703

2703-X-00-XX-00-00-07-0

Swage mount in 2,39 hole

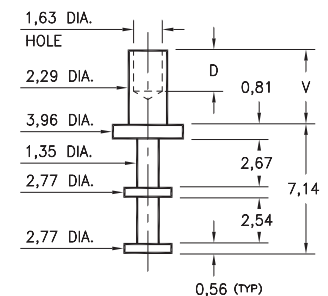


Basic Part Number	Board Thickness	Length V
2703-1	0,79	1,96
2703-2	1,57	2,72
2703-3	2,39	3,48
2703-4	3,18	4,24

2702

2702-X-00-XX-00-00-07-0

Swage mount in 2,39 hole

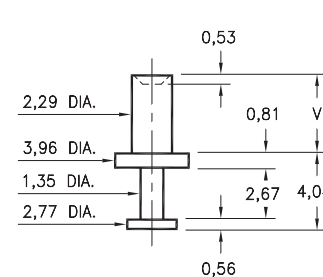


Basic Part Number	Board Thickness	Length V	Depth D
2702-1	0,79	1,91	1,60
2702-2	1,57	2,67	2,36
2702-3	2,39	3,43	2,36
2702-4	3,18	4,19	2,36

2710

2710-X-00-XX-00-00-07-0

Swage mount in 2,39 hole

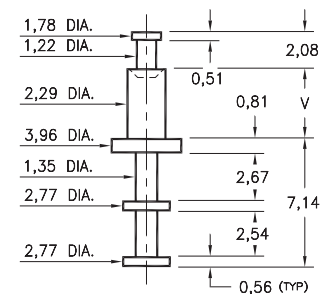


Basic Part Number	Board Thickness	Length V
2710-1	0,79	1,57
2710-2	1,57	2,39
2710-3	2,39	3,18
2710-4	3,18	3,96

2717

2717-X-00-XX-00-00-07-0

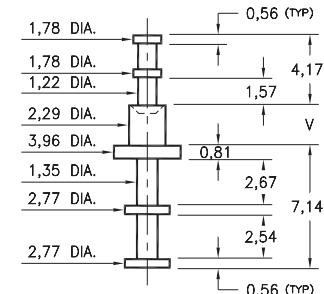
Swage mount in 2,39 hole



2713

2713-X-00-XX-00-00-07-0

Swage mount in 2,39 hole



Basic Part Number	Board Thickness	Length V
271X-1	0,79	1,57
271X-2	1,57	2,39
271X-3	2,39	3,18
271X-4	3,18	3,96

SPECIFICATIONS:

Pin Material: Brass Alloy 360, 1/2 Hard
(Swage pins are annealed)

Dimensions: Millimeters

Tolerances On: Lengths: $\pm 0,13$
Diameters: $\pm 0,051$
Angles: $\pm 2^\circ$



ORDER CODE: **XXXX - X - 00 - XX - 00 - 00 - 07 - 0**

BASIC PART #

SPECIFY PIN FINISH:

- 01 5,08 μ m TIN/LEAD OVER NICKEL
- ◆ 80 5,08 μ m TIN OVER NICKEL (RoHS)
- ◆ 44 7,62 μ m SILVER OVER COPPER (RoHS)
- 50 7,62 μ m ELECTRO-SOLDER
(60/40 SnPb)

