



Copyright FCI

1 | 2



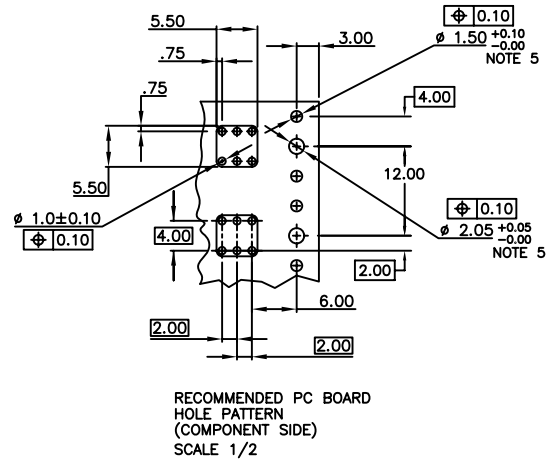
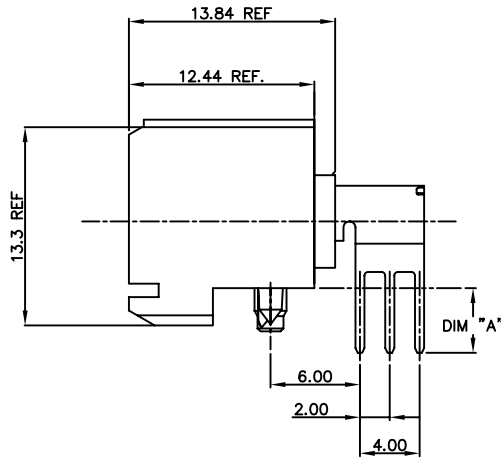
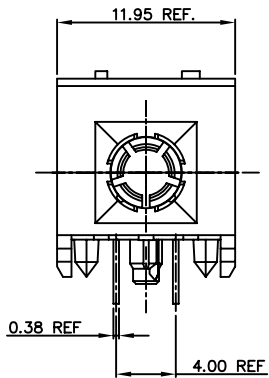
FCIconnect.com

3 |



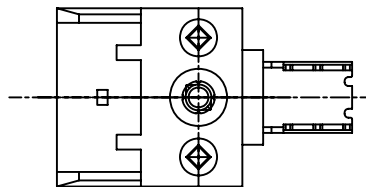
4

PRODUCT NO.	P.C.B. THICKNESS	DIM "A"
84601-001	3.2	4.3
84601-002	2.4	3.5
84601-003	1.6	2.7
84601-001LF	3.2	4.3
84601-002LF	2.4	3.5
84601-003LF	1.6	2.7



NOTES:

- BODY MATERIAL: LCP, 30% GLASS-FILLED, FLAME RETARDANT, ACC, UL94-V0
- TERMINAL MATERIAL: BeCu
- PLATING SOLDER TAILS: 2.5 μ m SnPb
84601-00Y IS SnPb
84601-00YLF IS Sn (LEAD FREE)
- PLATING CONTACT AREA: 0.80 μ m Au OVER 1.3 μ m Ni.
- INDICATED HOLES ARE UNPLATED
- PRODUCT MARKETING: PART NUMBER & BATCH I.D.
- THE PRODUCTS WHERE THE PART NUMBER ENDS IN LF MEET THE EUROPEAN UNION DIRECTIVES AND OTHER COUNTRY REGULATIONS AS DESCRIBED IN GS-22-008.
- ALL PRODUCTS WILL WITHSTAND EXPOSURE TO 260°C FOR 60 SECONDS IN A CONVECTION, INFRA-RED OR VAPOUR PHASE REFLOW OVEN.



mat'l. code				surface	tolerance	projection	product family
SEE NOTES				ASME Y14.5	ASME Y14.5		METRAL (tm)
ltr	ec'n no	dr	date	tolerances unless otherwise specified		MM	title
A	v80795	MDF	4/30/98	angles	X*3		
B	v01598	JWS	7/12/00	fil	XX*18	scale 1:1	POWER CONNECTOR ASS'Y W/METRAL HSG. P/N 73478
C	v06-0141	JRV	3/20/06	0' ±2'	XXX*051		
D	v06-0622	JRV	2006-06-26	chr	M. FETROW	4/30/98	dwg no
				engr	C. PENDLETON	4/30/98	sheet 1 of 1
				chr	C. PENDLETON	4/30/98	size
				appd	C. PENDLETON	4/30/98	84601
sheet	revision	D					type
index	sheet	1					CUSTOMER Drawing