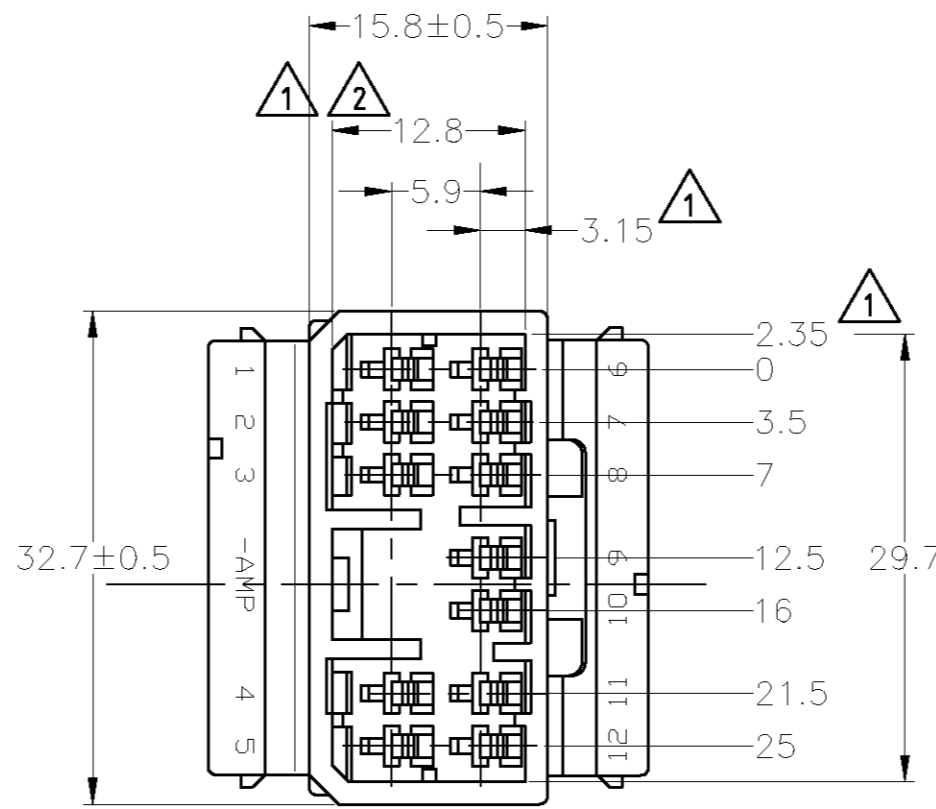
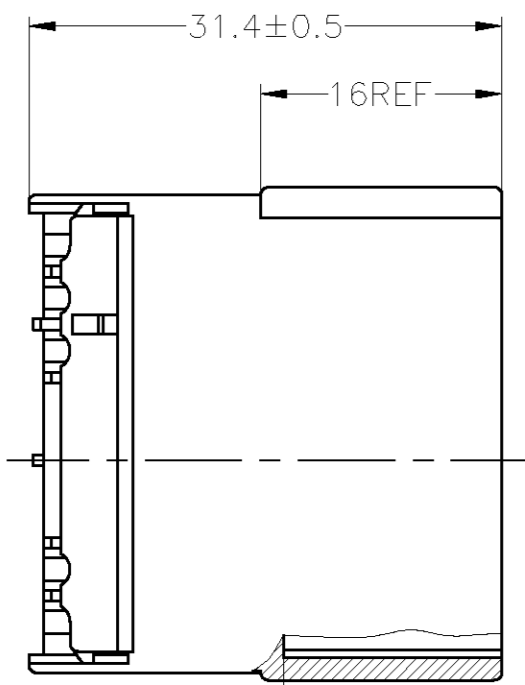


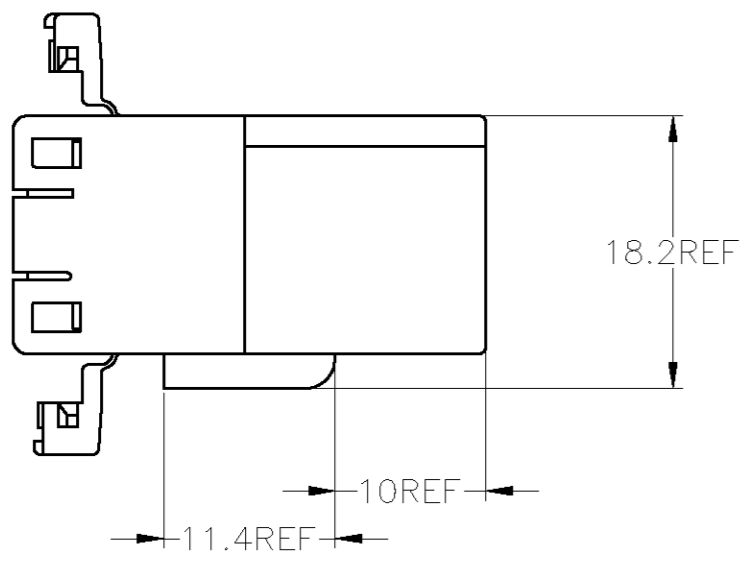
THIS DRAWING IS UNPUBLISHED. RELEASED FOR PUBLICATION  
 © COPYRIGHT BY TYCO ELECTRONICS CORPORATION. ALL INTERNATIONAL RIGHTS RESERVED.

LOC	DIST	REVISIONS					
J	-	P	LTR	DESCRIPTION	DATE	DWN	APVD
		E1	REVISED	ECR-08-031766	05DEC08	SF	KB



1. MUST BE KEPT BETWEEN **-A-** AND 2
2. TO BE MATED WITH PLUG HOUSING SMOOTHLY
3. APPLIED TAB CONTACT; P/N 173633 AND 173645
4. APPLIED PLUG HOUSING; P/N 173851
5. PRODUCT SPEC; 108-5264

1. **-A-** 面より2mmの範囲で測定
2. 相手ハウジングと所定の機能を満足して嵌合できること
3. 内装するタブコンタクトは型番173633, 173645
4. 嵌合相手ハウジング型番173851
5. 製品規格: 108-5264



V-2	白 (WHITE)	1-174933-1
HB	オレンジ (ORANGE)	174933-8
	濃灰 (DARK GRAY)	174933-6
	青 (BLUE)	174933-5
	緑 (GREEN)	174933-4
	黒 (BLACK)	174933-2
	白 (WHITE)	174933-1
使用材料難燃グレード (FLAMMABILITY OF MATERIAL)		色 (COLOR)
		型番 (PART NUMBER)

THIS DRAWING IS A CONTROLLED DOCUMENT.

DWN	S.FUJITA	05DEC08	Tyco Electronics Corporation Kawasaki, Japan
CHK	K.BETSUI	05DEC08	
APVD	K.BETSUI	05DEC08	
PRODUCT SPEC	108-5264		
APPLICATION SPEC	-		NAME
			070 SERIES MULTILOCK CONNECTOR 12POSITION CAP HOUSING WIRE TO WIRE
WEIGHT	-		SIZE
CUSTOMER DRAWING			CAGE CODE
			DRAWING NO
			RESTRICTED TO
			A300779
			C-174933
			SCALE
			2:1
			SHEET
			1 OF 1
			REV
			E1

TOLERANCES UNLESS OTHERWISE SPECIFIED:

10 >=	: ±0.2
30 >	: ±0.25
> 30	: ±0.3
ANGLE	: ±3°

DIMENSIONS:	TOLERANCES UNLESS OTHERWISE SPECIFIED:
mm	
0 PLC	±-
1 PLC	±-
2 PLC	±-
3 PLC	±-
4 PLC	±-
ANGLES	±-
MATERIAL	FINISH
PBT	-