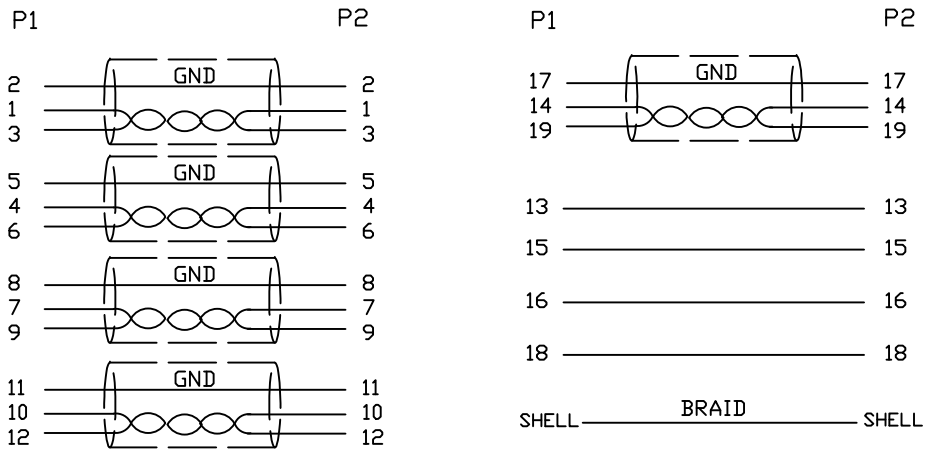


1.Wiring Diagram.



2.Cable test condition :

- Open / Short : 100%
- Insulation resistance : 5M ohms
- Contact resistance : 2 ohm
- Hipot : DC 300V / 1 sec
- 3.Each pcs with PE polybag.

NO.	PART NO.	DESCRIPTION	QTY	UNIT/REF	APPROVAL	CUSTOMER P/N:	REV
5	CDPER	W20MM*L35MM	2				
4	PVC	45P PVC BLACK OVERMOLD	25g				
3	PE	LLDPE 500026 6201 INSIDE MOLDING	16g				
2	CONN	HDMI A TYPE MALE PIN G/F ,SHELL PLATED G/F, INSULATION BLACK	2	P1.P2			
1	CABLE	UL20276 [28AWG (7/0.12TA) *IP+D(7/0.12TA)*1C+AL]*5+28AWG (7/0.12TA) *4C +AEM(16/6/0.12AM) OD7.3 BLACK	1	1000mm			
BILL OF MATERIAL							

A		2017/4/20
CnC Tech,LLC		TITLE: HDMI A/M TO HDMI A/M CABLE
DRAWN: EDWINLAI		DWN NO.: 740-10011-00100
CHECKED: Win.C		CUSTOMER P/N:
DATE: 2/28/17		CUSTOMER:
APPROVAL:		SHEET 1 OF 1