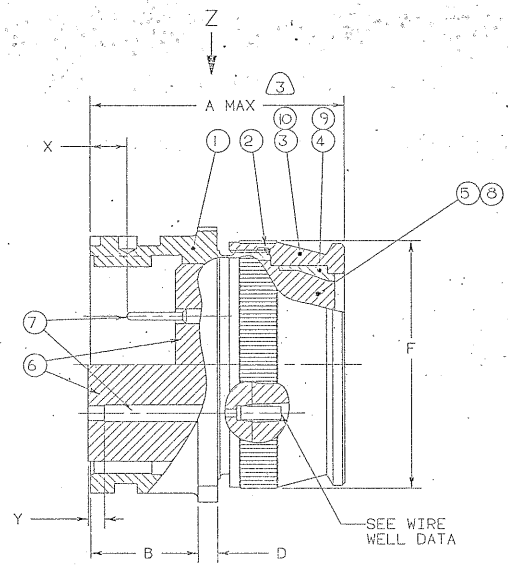
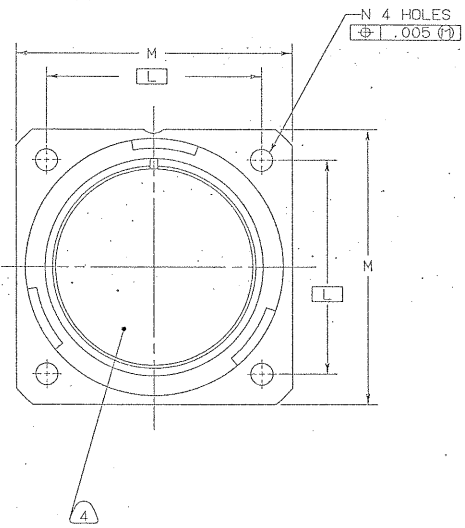


REVISIONS				
ZONE	LTR	DESCRIPTION	DATE	APPROVED
	A	INITIAL RELEASE NUM: 27799-87		
	B	(CL) SEE CHG NOTICE ECN: 26979	12/19/91	[Signature]
	C	(CL) SEE ECN 27799	07/27/91	[Signature]
	D	(CL) SEE ECN: 26347	08/22/91	[Signature]

CONTACT SIZE	SHELL SIZE	X	Y
16 SHORT	10SL, 14S, 16S	.087+.039	.079
16 LONG	14, 16, THRU 40	.260 ^{+.052} _{-.041}	.102
12	14, 16, THRU 40	.118 ^{+.052} _{-.041}	.102
4, 8, 0	14, 16, THRU 40	.0914+.039	.102



QTY	REQD.	FORM NO.	PART NUMBER	DESCRIPTION	NOTES
10	1		10-581920-XX3	NUT	15
9	1		10-581919-XX1	SLEEVE	15
8	1		SEE COLUMN	GR0MMET	15
7			SEE NOTE 10	CONTACT	
6	1		10-748XX-XXX	INSERT	
5	1		10-607XX-XX	GR0MMET	14
4	1		10-564869-XX	SLEEVE	14
3	1		10-564868-XX3	NUT	14, 3
2	1		10-35599-XX1	GASKET	9
1	1		SEE COLUMN	SHELL	

SEE SHEET 2
NOTES:

THE USE OF THIS DOCUMENT IS UNLIMITED. HOWEVER, DOCUMENTS REFERENCED HEREON MAY CONTAIN LIMITED RIGHTS DATA.

UNLESS OTHERWISE SPECIFIED
LINEAR DIMENSIONS ARE IN INCHES.
TOLERANCES: .XXX+.010,
.XX ±.03, .X ±.1, ANGLES ±2°.
OTHER STANDARDS PER 9-3800
AND DDD-D-1000. NOTE REF= (XX)

SPECIFICATIONS	SIGNATURES	DATES	DESCRIPTION
MATERIAL SPEC. N/A	BIVIANO	11/18/91	CONNECTOR, ELECTRICAL RECEPTACLE, FRONT PANEL MOUNT, REVERSE BAYONET COUPLING, TYPE GTC00RV(1)-1, SOLDERLESS
PROCESS SPEC. SEE NOTE 5	[Signature]	11/18/91	
	[Signature]	11/18/91	
	[Signature]	11/18/91	
	[Signature]	11/18/91	
	[Signature]	11/18/91	

ARPHENOL CORPORATION
BENDIX CONNECTOR OPERATIONS
SIRSEY, N.Y.

SIZE: 1/2" x 1/2" x 1/2"
PART NO: 71-580432-12P
REV: 1

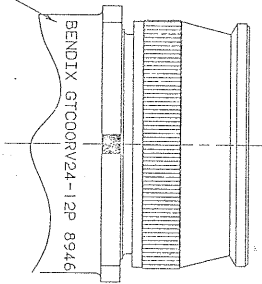
71-580470/489
REV: 1 OF 2

ASSEMBLY NUMBER	SHELL SIZE	GT NUMBER	SHELL	A MAX	B +.016 -.000	D ±.008	F DIA MAX	M ±.012	N DIA +.004 -.000	GROMMET
71-580470-()	8S	NOT AVAILABLE								
71-580471-()	10S	NOT AVAILABLE								
71-580472-()	10SL	GTCOORV10SL-()	10-580920-113	1.417	.559	.110	.787	.717	1.000	.126 10-581825-()
71-580473-()	12S	NOT AVAILABLE								
71-580474-()	12	NOT AVAILABLE								
71-580475-()	14S	GTCOORV14S-()	10-580920-143	1.437	.559	.126	.945	.906	1.181	.126 10-581827-()
71-580476-()	14	NOT AVAILABLE								
71-580477-()	16S	GTCOORV16S-()	10-580920-163	1.437	.559	.126	1.024	.969	1.280	.126 10-581829-()
71-580478-()	16	GTCOORV16-()	10-580920-173	1.929	.748	.126	1.024	.969	1.280	.126 10-581830-()
71-580479-()	18	GTCOORV18-()	10-580920-183	1.929	.748	.157	1.161	1.063	1.378	.126 10-581831-()
71-580480-()	20	GTCOORV20-()	10-580920-203	1.969	.748		1.299	1.157	1.496	.126 10-581832-()
71-580481-()	22	GTCOORV22-()	10-580920-223	1.969	.748		1.417	1.252	1.614	.126 10-581833-()
71-580482-()	24	GTCOORV24-()	10-580920-243	2.008	.811		1.575	1.374	1.752	.146 10-581834-()
71-580483-()	28	GTCOORV28-()	10-580920-283	2.008	.811		1.811	1.563	2.000	.146 10-581835-()
71-580484-()	32	GTCOORV32-()	10-580920-323	2.087	.874		2.028	1.752	2.244	.169 10-581836-()
71-580485-()	36	GTCOORV36-()	10-580920-363	2.106	.874		2.283	1.937	2.500	.169 10-581837-()
71-580486-()	40	GTCOORV40-()	10-580920-403	2.126	.874		2.539	2.185	2.752	.169 10-581838-()
71-580487/489		NOT AVAILABLE								

TO COMPLETE, ADD APPLICABLE INSERT ARRANGEMENT SUFFIX PER 9-2437

WIRE WELL DATA					
CONTACT SIZE	0	4	8	12	16
WELL DIA	.453±.005	.281 ±.005 -.004	.179 ±.004 -.002	.098 ±.004 -.001	.063 ±.004 -.001
WELL DEPTH	±.031 -.000	.592	.500	.500	.250 .250

BLACK INK STAMP PER 9-3856-5
"BENDIX". GT NUMBER (SEE COLUMN)
& DATE CODE (9-3895).
CHARACTERS TO BE .094-.125 HIGH.
AND LOCATED APPROX AS SHOWN
EXAMPLE:
BENDIX GTCOORV24-12P 8946



VIEW AT Z

- FOR CONTACT SIZE, SPACING & SERVICE RATING, SEE MIL-STD-1651 OR L-11908-()/L-11948-().
- UNITS MEET THE APPLICABLE REQUIREMENTS OF MIL-C-5015.
- DRAWING ILLUSTRATES FINAL ASSEMBLY. FOR STORAGE & SHIPPING, NUT MUST BE LOOSELY COUPLED. CONTACTS ARE SHIPPED UNASSEMBLED.
- INSERTS ARE NOT REMOVABLE.
- PROCESS SPEC:
ASSY 9-9238
TEST 9-3106-18
9-3856-5, 9-3895, 9-2437, 9-1936
- SEE WORK ORDER FOR PERMISSIBLE ADDITIONAL OR ALTERNATE STAMPING.
- FOR MATING CONNECTOR ASSEMBLIES, SEE 71-580450/469 & OTHERS.
- FOR FINAL INSTALLATION, CONTACTS MUST BE ASSEMBLED INTO ALL INSERT HOLES. ALL UNUSED GROMMET HOLES MUST BE FILLED WITH THE APPROPRIATE SIZE SEALING PLUG.
- APPLY A LIGHT FILM OF LUBRICANT 9-1936 TO GASKET.
- SEE SEPARATE PARTS LIST FOR COMPONENT PART NUMBERS AND QUANTITIES.
- PACKAGE PER PRODUCTION PROCESS SHEET.
- TO COMPLETE INDICATED GROMMET PART NO., ADD APPLICABLE ARRANGEMENT SUFFIX.
- INDICATED ITEMS, F/N'S 8, 9 & 10 ARE APPLICABLE TO CONNECTORS CONTAINING CONTACT ARRANGEMENTS WITH SIZES "4" & "8".
- INDICATED ITEMS, F/N'S 3, 4 & 5 ARE APPLICABLE TO CONNECTORS CONTAINING CONTACT ARRANGEMENTS OTHER THAN THOSE SPECIFIED IN NOTE 13.

NOTES:

THE USE OF THIS DOCUMENT IS UNLIMITED. HOWEVER, DOCUMENTS REFERENCED HERON MAY CONTAIN LIMITED RIGHTS DATA.

SIR 10040
D 77820 71-580470/489
SCALE 1:1
REV D