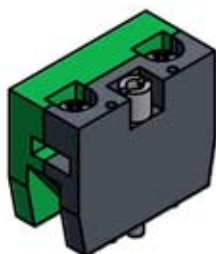


## REVISION FOR DWG # 1PB-S1-4

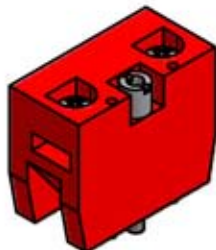
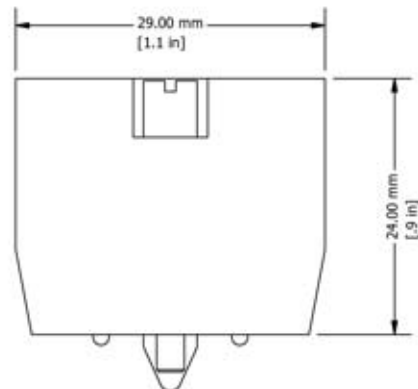
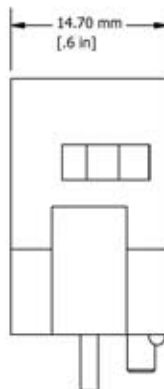
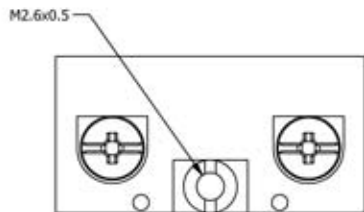
REV	CH.NO.	DESCRIPTION	DATE	REVISED BY
-	-	ORIGINAL DESIGN	11/15/2007	PHILIPP E.

**S1**

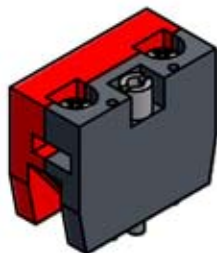
Normally Open Silver

**S3**

Normally Open Gold Plated

**S2**

Normally Closed Silver

**S4**

Normally Closed Gold Plated

UNLESS OTHERWISE SPECIFIED:  
 • ALL DIMENSIONS ARE IN MILLIMETERS  
 • THIRD ANGLE PROJECTION



M  
E  
T  
R  
I  
C

This Drawing is the property of

**Altech Corp.**

35 Royal Road  
 Flemington, NJ 08822-6000  
 (908) 806-9400  
 Fax (908) 806-9400

AND IS A CONFIDENTIAL  
 DISCLOSURE WITHOUT  
 CONSIDERATION OTHER THAN THE  
 BORROWER'S AGREEMENT THAT IT  
 SHALL NOT BE REPRODUCED,  
 COPIED, LENT OR DISPOSED OF  
 DIRECTLY OR INDIRECTLY NOR  
 USED FOR ANY PURPOSE OTHER  
 THAN THAT FOR WHICH IT IS  
 SPECIFICALLY FURNISHED.

TITLE **22 mm Push Button Switch Contacts Panel Mount Types S1, S2, S3, S4**

DRAWN BY: Philipp Ernstberger

11/15/2007

CHECKED BY: Laszlo Gyorgypal

11/15/2007

RELEASED BY: Laszlo Gyorgypal

11/15/2007

DRAWING NO.:

**1PB-S1-4**

REV.:

-

SCALE: -

SHEET: 1

OF: 1